

# Cambridge Forum for Sustainability and the Environment



**The world is changing: A rising world population, declining resources and a changing climate are all reshaping where we live and how we live. So how do we respond?**

This key question being asked by a new interdisciplinary Forum in the university which aims to bring together people from across and outside Cambridge to discuss some of the most pressing sustainability challenges we face in the future and the research we need to do to help to prepare for and address those challenges.

## How we work

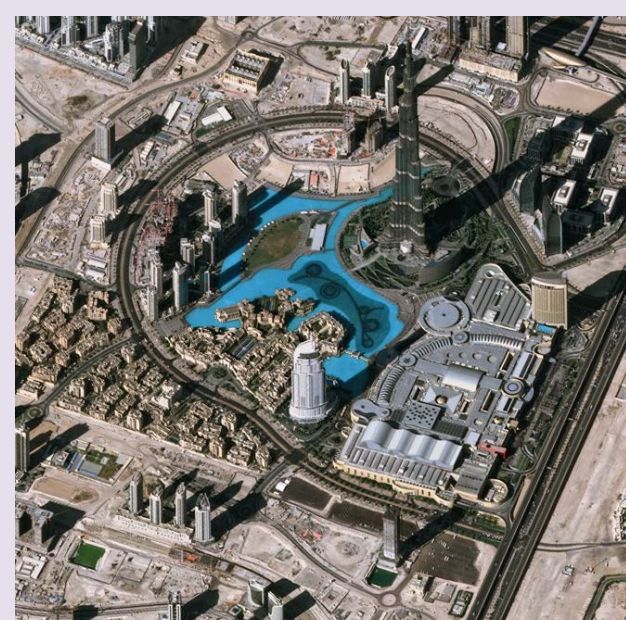
The Forum brings together 20 of the University's leading experts in areas ranging from energy, biodiversity and food security to anthropology, architecture, history and economics. Professor Lord Martin Rees is the Forum's Chair and Professor Paul Linden is the Director.

The group meets on the 3<sup>rd</sup> Tuesday of the month and three expert 'witnesses' from across and outside Cambridge are invited to each one. Our aim is to bring people together who would not usually meet each other, so the witnesses range from policy- and decision-makers from governments and businesses to technical experts and researchers. By bringing together such a rich mixture, we hope that the Forum will generate fresh and innovative perspectives and identify emerging research pathways.

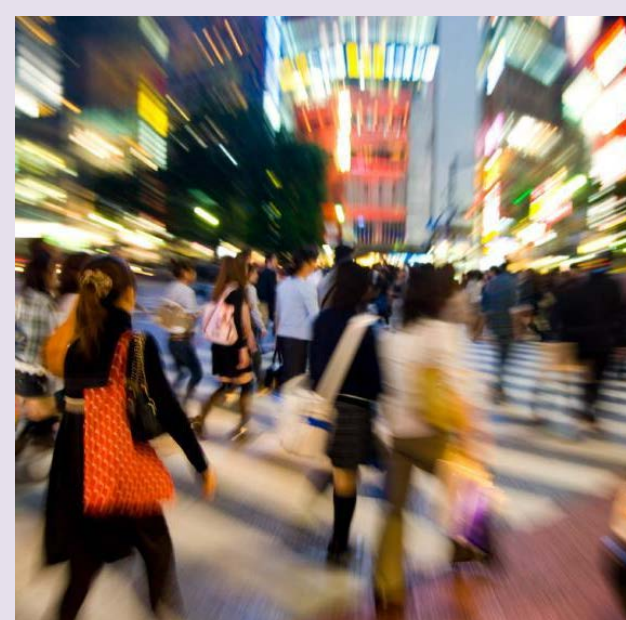
## Our theme: Sustainability in an uncertain future

### Sustainable cities

Our first topic focused on cities and expert witnesses came to answer questions and help us to think about the characteristics of a sustainable city and the governance systems needed to support them.

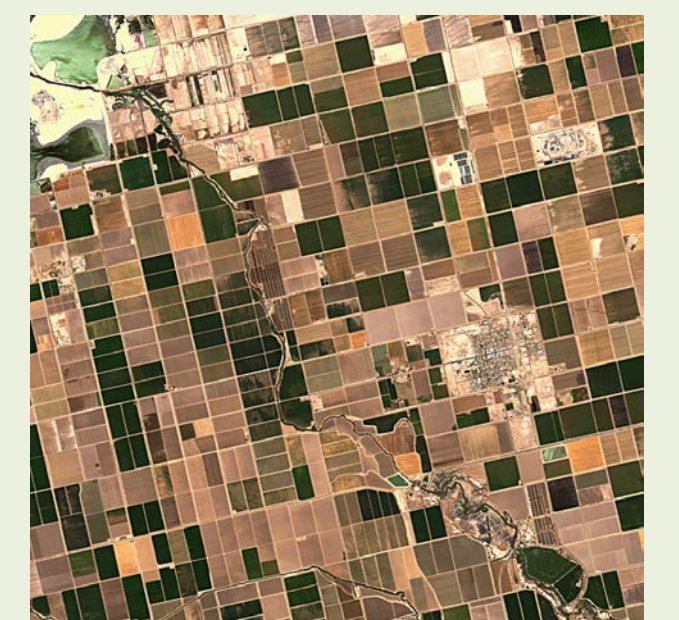


These meetings have generated some fascinating ideas. We're in the process of distilling them into an output which will bring together a series of research questions related to how we live in cities, where we live and how we respond to change.

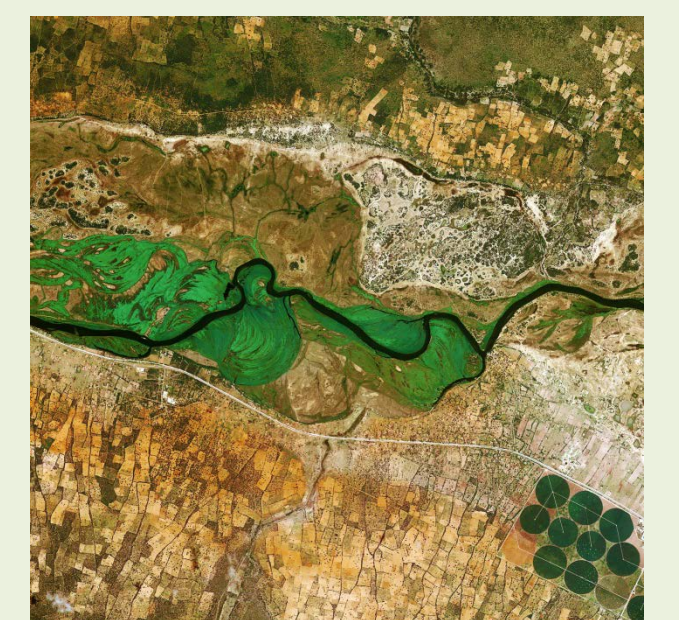


### Connecting biodiversity, energy and food security

Starting in October, the Forum will switch its focus to the land outside towns and cities and how that land is used to support people through agriculture, ecosystem services, and biodiversity.



Through it, we will explore issues such as the drivers of land use change at a range of different scales, supply and demand for resources in the future, food versus fuel, water use, and natural versus managed environments.

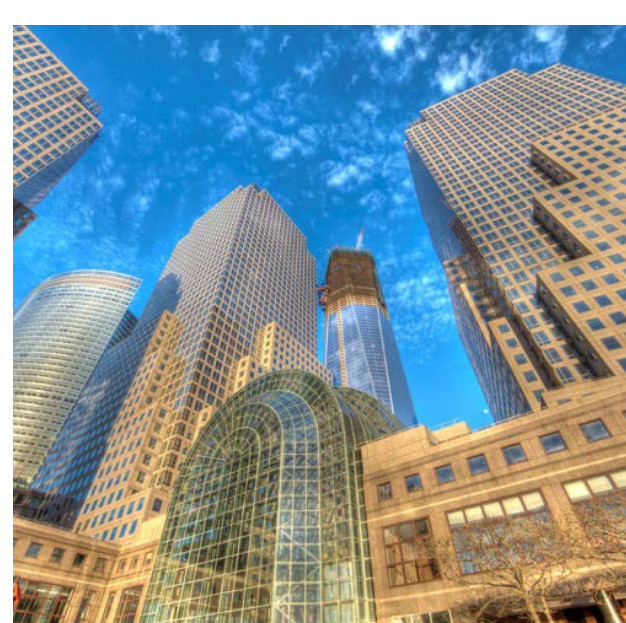


### Sustainable cities: Output launch

**14<sup>th</sup> January 2015**

**St Catherine's College, Cambridge**

This is a free, public event so if you would like to come to it, please contact Rosamunde Almond.



### For more information:



**Dr Rosamunde Almond**

Dept. of Applied Mathematics and Theoretical Physics (DAMTP),  
Wilberforce Road, Cambridge, CB3 0WA

[r.almond@damtp.cam.ac.uk](mailto:r.almond@damtp.cam.ac.uk)

More details about the output and the Forum can be found on our website:

[www.cfse.cam.ac.uk](http://www.cfse.cam.ac.uk)



**UNIVERSITY OF  
CAMBRIDGE**